

ULTRA LITE TRIANGLE TRUSSING

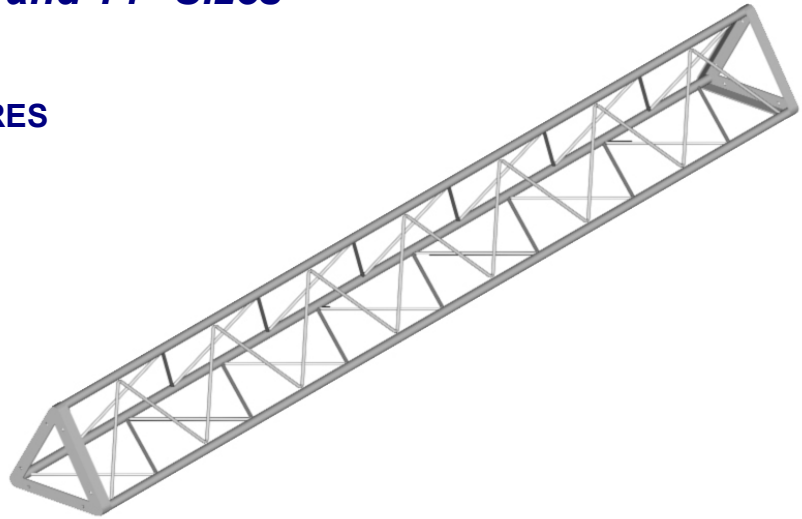
Available in 8", 10", 12", and 14" Sizes

ULTRA LITE TRI TRUSS FEATURES

- 1.05" OD 6061-T6 Aluminum Tube
- 3/8" Solid Aluminum Rod Bracing
- .113" Wall Thickness
- 1-1/2" x 3/16" Aluminum End Plates
- Highly Polished Aluminum Tubing
- Custom Lengths & Corners Available

ULTRA LITE TRI TRUSS CORNER ADAPTERS

- 90 Degree Horizontal
- 90 Degree Vertical
- 45 Degree Corner
- "T" 3-Way Adapter
- 4-Way Cross Adapter



8" ULTRA LITE TRI TRUSS INFO

Part Number	Dimensions	Weight
3-08-120	8" x 10'	18 lbs.
3-08-096	8" x 8'	15 lbs.
3-08-060	8" x 5'	10 lbs.
3-08-030	8" x 2.5'	6 lbs.

8" ULTRA LITE TRI TRUSS WEIGHT LOADING INFO

Length	10' Span	20' Span	30' Span	40' Span
Uniform Distribution	813 lbs.	360 lbs.	260 lbs.	165 lbs.
Center Point Load	272 lbs.	181 lbs.	132 lbs.	82 lbs.

10" ULTRA LITE TRI TRUSS INFO

Part Number	Dimensions	Weight
3-10-120	10" x 10'	20 lbs.
3-10-096	10" x 8'	15 lbs.
3-10-060	10" x 5'	10 lbs.
3-10-030	10" x 2.5'	6 lbs.

10" ULTRA LITE TRI TRUSS WEIGHT LOADING INFO

Length	10' Span	20' Span	30' Span	40' Span
Uniform Distribution	876 lbs.	496 lbs.	338 lbs.	227 lbs.
Center Point Load	300 lbs.	250 lbs.	174 lbs.	114 lbs.

12" ULTRA LITE TRI TRUSS INFO

Part Number	Dimensions	Weight
3-12-120	12" x 10'	31 lbs.
3-12-096	12" x 8'	18 lbs.
3-12-060	12" x 5'	13 lbs.
3-12-030	12" x 2.5'	7 lbs.

12" ULTRA LITE TRI TRUSS WEIGHT LOADING INFO

Length	10' Span	20' Span	30' Span	40' Span
Uniform Distribution	912 lbs.	594 lbs.	403 lbs.	276 lbs.
Center Point Load	300 lbs.	240 lbs.	198 lbs.	136 lbs.

14" ULTRA LITE TRI TRUSS INFO

Part Number	Dimensions	Weight
3-14-120	14" x 10'	22 lbs.
3-14-096	14" x 8'	18 lbs.
3-14-060	14" x 5'	13 lbs.
3-14-030	14" x 2.5'	7 lbs.

14" ULTRA LITE TRI TRUSS WEIGHT LOADING INFO

Length	10' Span	20' Span	30' Span	40' Span
Uniform Distribution	960 lbs.	780 lbs.	441 lbs.	300 lbs.
Center Point Load	540 lbs.	420 lbs.	276 lbs.	156 lbs.