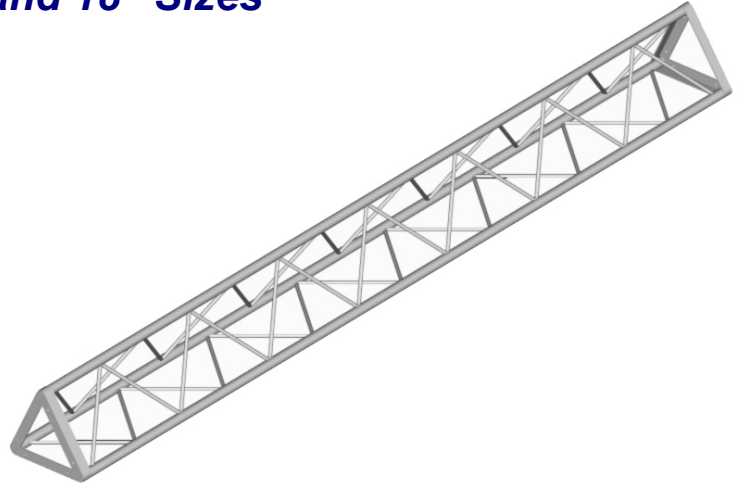


STANDARD TRIANGLE TRUSSING

Available in 8", 10", 12", 14" and 18" Sizes

STANDARD TRI TRUSS FEATURES

- 1-3/8" OD 6061-T6 Aluminum Tube
- 1/2" Solid Aluminum Rod Bracing
- .125" Wall Thickness
- 1-1/2" x 3/16" Aluminum End Plates
- Highly Polished Aluminum Tubing
- Custom Lengths & Corners Available



STANDARD TRI TRUSS CORNER ADAPTERS

- 90 Degree Horizontal
- 90 Degree Vertical
- 45 Degree Corner
- "T" 3-Way Adapter
- 4-Way Cross Adapter

8" STANDARD TRI TRUSS INFO

Part Number	Dimensions	Weight
4-08-120	8" x 10'	27 lbs.
4-08-096	8" x 8'	21 lbs.
4-08-060	8" x 5'	13 lbs.
4-08-030	8" x 2.5'	10 lbs.

8" STANDARD TRI TRUSS WEIGHT LOADING INFO

Length	10' Span	20' Span	30' Span	40' Span
Uniform Distribution	1354 lbs.	598 lbs.	432 lbs.	275 lbs.
Center Point Load	453 lbs.	301 lbs.	220 lbs.	136 lbs.

***Weight Load Certified By Structural Engineering Firm**

10" STANDARD TRI TRUSS INFO

Part Number	Dimensions	Weight
4-10-120	10" x 10'	28 lbs.
4-10-096	10" x 8'	24 lbs.
4-10-060	10" x 5'	15 lbs.
4-10-030	10" x 2.5'	8 lbs.

10" STANDARD TRI TRUSS WEIGHT LOADING INFO

Length	10' Span	20' Span	30' Span	40' Span
Uniform Distribution	1460 lbs.	826 lbs.	562 lbs.	378 lbs.
Center Point Load	500 lbs.	416 lbs.	290 lbs.	190 lbs.

***Weight Load Certified By Structural Engineering Firm**

12" STANDARD TRI TRUSS INFO

Part Number	Dimensions	Weight
4-12-120	12" x 10'	35 lbs.
4-12-096	12" x 8'	24 lbs.
4-12-060	12" x 5'	19 lbs.
4-12-030	12" x 2.5'	10 lbs.

12" STANDARD TRI TRUSS WEIGHT LOADING INFO

Length	10' Span	20' Span	30' Span	40' Span
Uniform Distribution	1520 lbs.	990 lbs.	672 lbs.	460 lbs.
Center Point Load	500 lbs.	400 lbs.	330 lbs.	226 lbs.

***Weight Load Certified By Structural Engineering Firm**

14" STANDARD TRI TRUSS INFO

Part Number	Dimensions	Weight
4-14-120	14" x 10'	33 lbs.
4-14-096	14" x 8'	22 lbs.
4-14-060	14" x 5'	17 lbs.
4-14-030	14" x 2.5'	8 lbs.

14" STANDARD TRI TRUSS WEIGHT LOADING INFO

Length	10' Span	20' Span	30' Span	40' Span
Uniform Distribution	1600 lbs.	1300 lbs.	735 lbs.	500 lbs.
Center Point Load	900 lbs.	700 lbs.	460 lbs.	260 lbs.

***Weight Load Certified By Structural Engineering Firm**

NOTE: 18" Tri Truss Has 1-3/4" x 1/4" Alum. End Plates

18" STANDARD TRI TRUSS INFO

Part Number	Dimensions	Weight
4-18-120	18" x 10'	37 lbs.
4-18-096	18" x 8'	28 lbs.
4-18-060	18" x 5'	23 lbs.
4-18-030	18" x 2.5'	11 lbs.

18" STANDARD TRI TRUSS WEIGHT LOADING INFO

Length	10' Span	20' Span	30' Span	40' Span
Uniform Distribution	4300 lbs.	2800 lbs.	2100 lbs.	1400 lbs.
Center Point Load	2600 lbs.	1700 lbs.	1250 lbs.	1050 lbs.

***Weight Load Certified By Structural Engineering Firm**