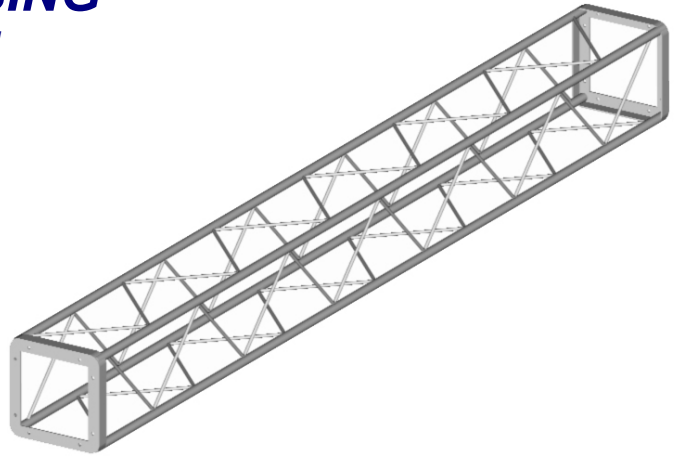


ULTRA LITE BOX TRUSSING

Available in 8"x8" and 12"x12"

ULTRA LITE BOX TRUSS FEATURES

1.05" OD 6061-T6 Aluminum Tube
3/8" Solid Aluminum Rod Bracing
.113" Wall Thickness
1-1/2" x 3/16" Aluminum End Plates
Highly Polished Aluminum Tubing
Custom Lengths & Corners Available



ULTRA LITE BOX TRUSS CORNER ADAPTERS

6-Way Corner Block
45 Degree Corner
Hinged Corner

8"x8" UL BOX TRUSS INFO

Part Number	Dimensions	Weight
6-08-120	8" x 8" x 10'	25 lbs.
6-08-096	8" x 8" x 8'	18 lbs.
6-08-060	8" x 8" x 5'	13 lbs.
6-08-030	8" x 8" x 2.5'	9 lbs.

8"x8" UL BOX TRUSS WEIGHT LOADING INFO

Length	10' Span	20' Span	30' Span	40' Span
Uniform Distribution	900 lbs.	780 lbs.	420 lbs.	240 lbs.
Center Point Load	600 lbs.	390 lbs.	180 lbs.	120 lbs.

12"x12" UL BOX TRUSS INFO

Part Number	Dimensions	Weight
6-12-120	12" x 12" x 10'	30 lbs.
6-12-096	12" x 12" x 8'	22 lbs.
6-12-060	12" x 12" x 5'	15 lbs.
6-12-030	12" x 12" x 2.5'	12 lbs.

12"x12" UL BOX TRUSS WEIGHT LOADING INFO

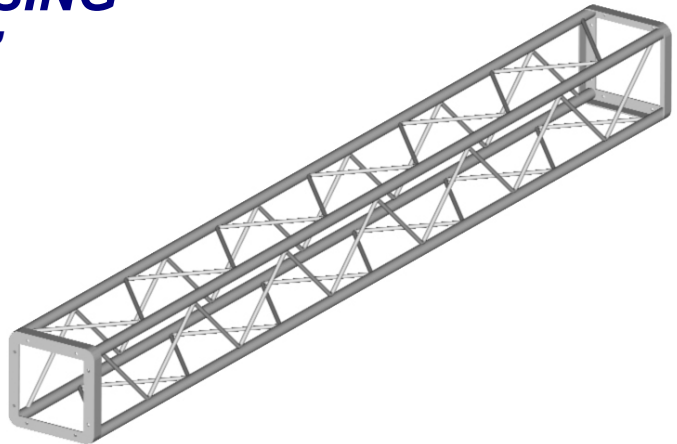
Length	10' Span	20' Span	30' Span	40' Span
Uniform Distribution	1500 lbs.	1470 lbs.	660 lbs.	390 lbs.
Center Point Load	1200 lbs.	900 lbs.	390 lbs.	240 lbs.

LIGHT DUTY BOX TRUSSING

Available in 8"x8" and 12"x12"

LIGHT DUTY BOX TRUSS FEATURES

1-3/8" OD 6061-T6 Aluminum Tube
1/2" Solid Aluminum Rod Bracing
.125" Wall Thickness
1-3/4" x 1/4" Aluminum End Plates
Highly Polished Aluminum Tubing
Custom Lengths & Corners Available



LIGHT DUTY BOX TRUSS CORNER ADAPTERS

6-Way Corner Block
45 Degree Corner
Hinged Corner

8"x8" LD BOX TRUSS INFO

Part Number	Dimensions	Weight
7-08-120	8" x 8" x 10'	35 lbs.
7-08-096	8" x 8" x 8'	25 lbs.
7-08-060	8" x 8" x 5'	18 lbs.
7-08-030	8" x 8" x 2.5'	13 lbs.

8"x8" LD BOX TRUSS WEIGHT LOADING INFO

Length	10' Span	20' Span	30' Span	40' Span
Uniform Distribution	1500 lbs.	1300 lbs.	700 lbs.	400 lbs.
Center Point Load	1000 lbs.	650 lbs.	300 lbs.	200 lbs.

12"x12" LD BOX TRUSS INFO

Part Number	Dimensions	Weight
7-12-120	12" x 12" x 10'	51 lbs.
7-12-096	12" x 12" x 8'	31 lbs.
7-12-060	12" x 12" x 5'	17 lbs.
7-12-030	12" x 12" x 2.5'	13 lbs.

12"x12" LD BOX TRUSS WEIGHT LOADING INFO

Length	10' Span	20' Span	30' Span	40' Span
Uniform Distribution	2500 lbs.	2450 lbs.	1100 lbs.	650 lbs.
Center Point Load	2000 lbs.	1500 lbs.	650 lbs.	400 lbs.

*Weight Load Certified By Structural Engineering Firm