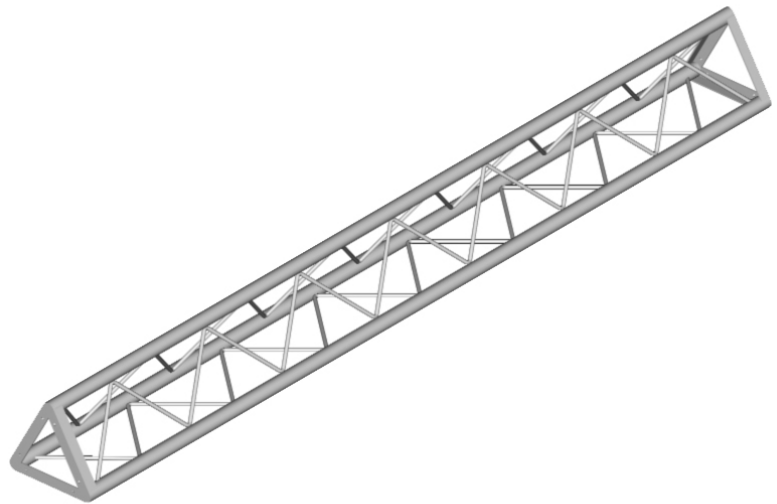


EURO STYLE TRIANGLE TRUSSING

Available in 8", 10", 12", 14" and 18" Sizes

EURO STYLE TRI TRUSS FEATURES

1.9" OD 6061-T6 Aluminum Tube Schd #40
1/2" Solid Aluminum Rod Bracing
.145" Wall Thickness
1-1/2" x 3/16" Aluminum End Plates
Highly Polished Aluminum Tubing
Custom Lengths & Corners Available



EURO STYLE TRI TRUSS CORNER ADAPTERS

90 Degree Horizontal
90 Degree Vertical
45 Degree Corner
"T" 3-Way Adapter
4-Way Cross Adapter

8" EURO TRI TRUSS INFO

Part Number	Dimensions	Weight
5-08-120	8" x 10'	25 lbs.
5-08-096	8" x 8'	19 lbs.
5-08-060	8" x 5'	11 lbs.
5-08-030	8" x 2.5'	8 lbs.

8" EURO TRI TRUSS WEIGHT LOADING INFO

Length	10' Span	20' Span	30' Span	40' Span
Uniform Distribution	1400 lbs.	650 lbs.	460 lbs.	300 lbs.
Center Point Load	475 lbs.	325 lbs.	250 lbs.	142 lbs.

10" EURO TRI TRUSS INFO

Part Number	Dimensions	Weight
5-10-120	10" x 10'	28 lbs.
5-10-096	10" x 8'	24 lbs.
5-10-060	10" x 5'	15 lbs.
5-10-030	10" x 2.5'	8 lbs.

10" EURO TRI TRUSS WEIGHT LOADING INFO

Length	10' Span	20' Span	30' Span	40' Span
Uniform Distribution	1460 lbs.	850 lbs.	575 lbs.	425 lbs.
Center Point Load	525 lbs.	425 lbs.	300 lbs.	225 lbs.

12" EURO TRI TRUSS INFO

Part Number	Dimensions	Weight
5-12-120	12" x 10'	33 lbs.
5-12-096	12" x 8'	22 lbs.
5-12-060	12" x 5'	17 lbs.
5-12-030	12" x 2.5'	8 lbs.

12" EURO TRI TRUSS WEIGHT LOADING INFO

Length	10' Span	20' Span	30' Span	40' Span
Uniform Distribution	1480 lbs.	1150 lbs.	700 lbs.	475 lbs.
Center Point Load	525 lbs.	475 lbs.	350 lbs.	220 lbs.

14" EURO TRI TRUSS INFO

Part Number	Dimensions	Weight
5-14-120	14" x 10'	33 lbs.
5-14-096	14" x 8'	22 lbs.
5-14-060	14" x 5'	25 lbs.
5-14-030	14" x 2.5'	8 lbs.

14" EURO TRI TRUSS WEIGHT LOADING INFO

Length	10' Span	20' Span	30' Span	40' Span
Uniform Distribution	1650 lbs.	1400 lbs.	800 lbs.	520 lbs.
Center Point Load	1500 lbs.	800 lbs.	550 lbs.	310 lbs.

NOTE: 18" Tri Truss Has 1-3/4" x 1/4" Alum. End Plates

18" EURO TRI TRUSS INFO

Part Number	Dimensions	Weight
5-18-120	18" x 10'	38 lbs.
5-18-096	18" x 8'	26 lbs.
5-18-060	18" x 5'	21 lbs.
5-18-030	18" x 2.5'	10 lbs.

18" EURO TRI TRUSS WEIGHT LOADING INFO

Length	10' Span	20' Span	30' Span	40' Span
Uniform Distribution	4400 lbs.	2900 lbs.	2200 lbs.	1400 lbs.
Center Point Load	2600 lbs.	1700 lbs.	1250 lbs.	1050 lbs.