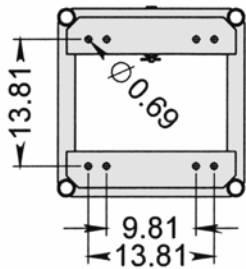
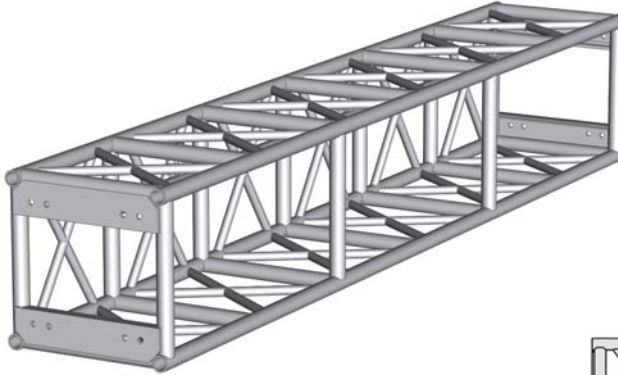




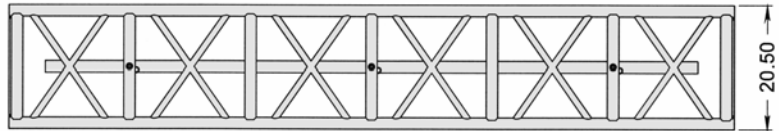
BASKETBALL TRUSS FEATURES

- Highly Polished Aluminum Tubing
- 1.9" OD 6061-T6 Aluminum Tube Schd #40
- 0.145" Wall Thickness
- 1.05" OD Aluminum Bracing
- Fabricated By Certified Welders
- Custom Lengths & Corners Available
- Powder Coating Available

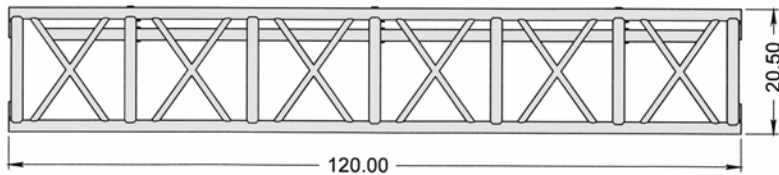


Front View

Top View



Side View



PLATED ESTIMATED LOAD DATA

Maximum Allowable Uniform Loads



Maximum Allowable Center Point Loads



SPAN (ft.)	LOAD (#/ft.)	LOAD (#)	MAX. DEFL. (in.)	LOAD (#)	MAX. DEFL. (in.)
10	640	6400	0.13	5600	
20	280	5600	0.63	3450	
30	89.3	2680	1.68	1635	
40	40	1600	2.60	920	

Connection: 5/8" Dia. x 2" Grade 8 Bolts

ORDERING INFORMATION

Item No.	Dimensions	Weight
9-05-120	20.5" x 20.5" x 10'	128 lbs.

SPIGOTED CATWALK TRUSS FEATURES

- Highly Polished Aluminum Tubing
- 1-1/2" OD 6061-T6 Aluminum Tube Schd #80
- 1-3/8" OD Aluminum Bracing
- 3/16" Thick 3003-H22 Aluminum Diamond Floor Plate
- Attached Light Bar
- Steel Spigots and Pins
- Call For Load Table

ORDERING INFORMATION

Item No.	Dimensions	Weight
13-09-120	26" x 30" x 120"	130 lbs.
13-09-060	26" x 30" x 60"	80 lbs.

