



FEATURES

- Highly Polished Aluminum Tubing
- 1.9" OD 6061-T6 Aluminum Tube Schd #40
- 0.145" Wall Thickness
- 1.05" OD Aluminum Bracing
- Fabricated By Certified Welders
- Custom Lengths & Corners Available
- Available With Steel Spigots
- Powder Coating Available

Applied Electronics Ballroom truss is manufactured with schedule 40, 1.9" OD x 0.145" wall main chords and 1.05" OD x 0.125" wall diagonal bracing. All components are 6061-T6 aluminum tubing and 5/8" grade 8 bolts are supplied for assembly of the truss elements. The 18" width increases the load rating and allows two lamp bars to be rigged back to back.



PLATED ALLOWABLE LOAD DATA

Maximum Allowable Uniform Loads



Maximum Allowable Center Point Loads



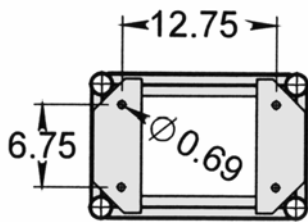
SPAN (ft.)	Maximum Allowable Uniform Loads			Maximum Allowable Center Point Loads	
	LOAD (#/ft.)	LOAD (#)	MAX. DEFL. (in.)	LOAD (#)	MAX. DEFL. (in.)
10	530	5300		2920	
20	190	3840		2840	
30	96	2880		1920	
40	60	2400		1760	

Connection: 5/8" Dia. x 2" Grade 8 Bolts

Weight Load Certified By Structural Engineer

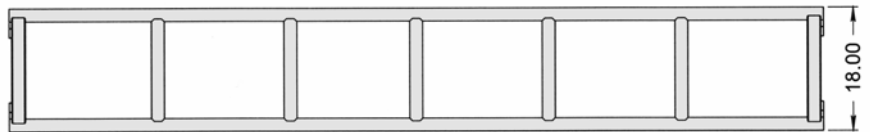
ORDERING INFORMATION

Item No.	Dimensions	Weight
9-04-120	18" x 12" x 10'	67 lbs.
9-04-096	18" x 12" x 8'	58 lbs.
9-04-060	18" x 12" x 5'	45 lbs.
9-04-030	18" x 12" x 2.5'	25 lbs.
9-04-004	4-Way Corner	20 lbs.

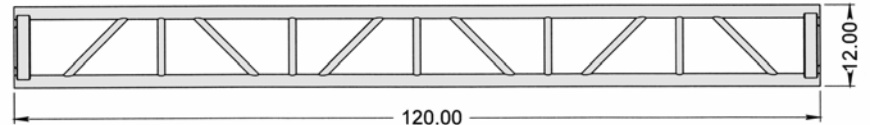


Front View

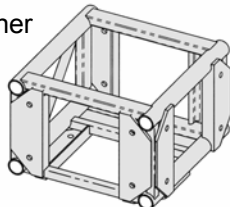
Top View



Side View



Standard Corner



Custom Corner

