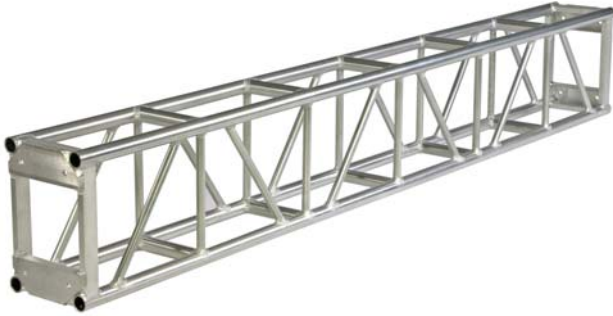




PLATED FEATURES

Highly Polished Aluminum Tubing
 1.9" OD 6061-T6 Aluminum Tube Schd #40
 0.145" Wall Thickness
 1.05" OD Aluminum Bracing
 Fabricated By Certified Welders
 Custom Lengths & Corners Available
 Powder Coating Available



Applied Electronics Heavy Duty 12" x 18" Box Truss is manufactured with schedule 40, 1.9" OD x 0.145" wall main chords and 1.05" OD x 0.125" wall diagonal bracing. All components are 6061-T6 aluminum tubing and 5/8" grade 8 bolts are supplied for assembly of the truss elements. It can be used to construct a grid when combined with the matching corner blocks.

PLATED ORDERING INFORMATION

Item No.	Dimensions	Weight
9-01-120	12" x 18" x 10'	67 lbs.
9-01-096	12" x 18" x 8'	58 lbs.
9-01-060	12" x 18" x 5'	45 lbs.
9-01-030	12" x 18" x 2.5'	25 lbs.
9-01-004	4-Way Corner	20 lbs.

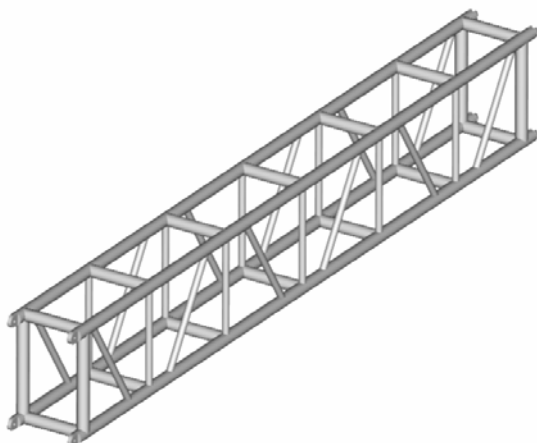
PLATED ESTIMATED LOAD DATA

SPAN (ft.)	Maximum Allowable Uniform Loads			Maximum Allowable Center Point Loads	
	LOAD (#/ft.)	LOAD (#)	MAX. DEFL. (in.)	LOAD (#)	MAX. DEFL. (in.)
10	420	4200		3100	
20	130	2600		1600	
30	56	1700		900	
40	21	850		600	

Connection: 5/8" Dia. x 2" Grade 8 Bolts

SPIGOTED FEATURES

Highly Polished Aluminum Tubing
 1.9" OD 6061-T6 Aluminum Tube Schd #80
 0.200" Wall Thickness
 1.05" OD Aluminum Bracing
 Steel Spigots and Pins
 Fabricated By Certified Welders
 Custom Lengths & Corners Available
 Powder Coating Available



SPIGOTED ORDERING INFORMATION

Item No.	Dimensions	Weight
13-06-120	12" x 18" x 10'	75 lbs.
13-06-096	12" x 18" x 8'	65 lbs.
13-06-060	12" x 18" x 5'	50 lbs.
13-06-030	12" x 18" x 2.5'	40 lbs.
13-06-002	2-Way Corner	20 lbs.
13-06-004	4-Way Corner	20 lbs.
13-06-005	5-Way Corner	25 lbs.

SPIGOTED ESTIMATED LOAD DATA

SPAN (ft.)	Maximum Allowable Uniform Loads			Maximum Allowable Center Point Loads	
	LOAD (#/ft.)	LOAD (#)	MAX. DEFL. (in.)	LOAD (#)	MAX. DEFL. (in.)
10	800	8000		8000	
20	240	4800		4000	
30	130	3900		1800	
40	50	2000		1000	

Connection: Steel Spigots and 3/4" x 2-1/2" Clevis Pins